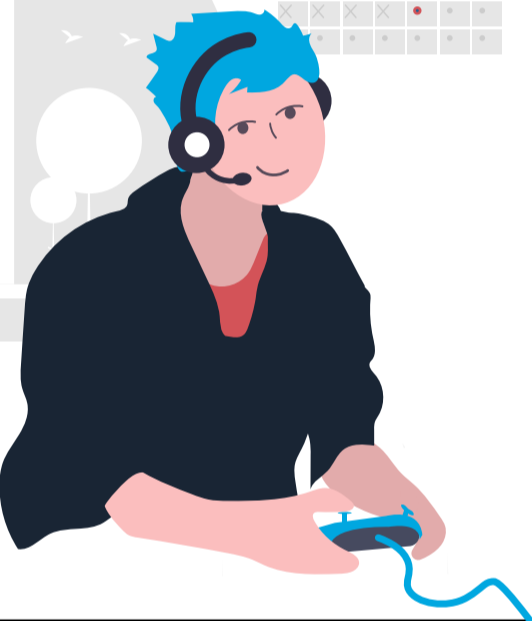
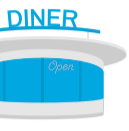


FALL 2020 MOVE-IN:

DO I NEED TO QUARANTINE



OPEN



You **DO**

need to quarantine on arrival if **ANY** of the following are true:

- If you are experiencing any COVID-19 symptoms OR have been in known contact with a COVID-positive individual in the last 14 days, you must quarantine at home for 14 days before coming to campus.
- You traveled to campus by plane, train, bus or taxi.
- You traveled to campus with people who have not met State of Vermont guidelines for quarantine (example: You're driving to Vermont with a friend who just returned from a trip to Texas.)
- You are traveling from a county defined as a "**quarantine county**" by the State of Vermont as of August 1st.
- You are traveling from a "non-quarantine county" and have a prolonged stop in a "quarantine county." (example: eating in a restaurant or staying in a hotel.)

You do **NOT**

need to quarantine on arrival if, in addition to maintaining proper social distancing and personal hygiene precautions:

- You are driving directly to Burlington from a location in Vermont, and have been in Vermont for the previous 14 days.
- You are driving directly to Burlington from a "**non-quarantine county**" with limited stops (example: only stopping for gas), and have been in that "non-quarantine county" for the previous 14 days.
- You are driving directly to Burlington from a "quarantine county" with limited stops (example: only stopping for gas) and you completed a 14 day quarantine prior to departure.



CHAMPLAIN COLLEGE

Please visit our [FAQ page](#) for additional quarantine details, campus arrival dates and testing information.